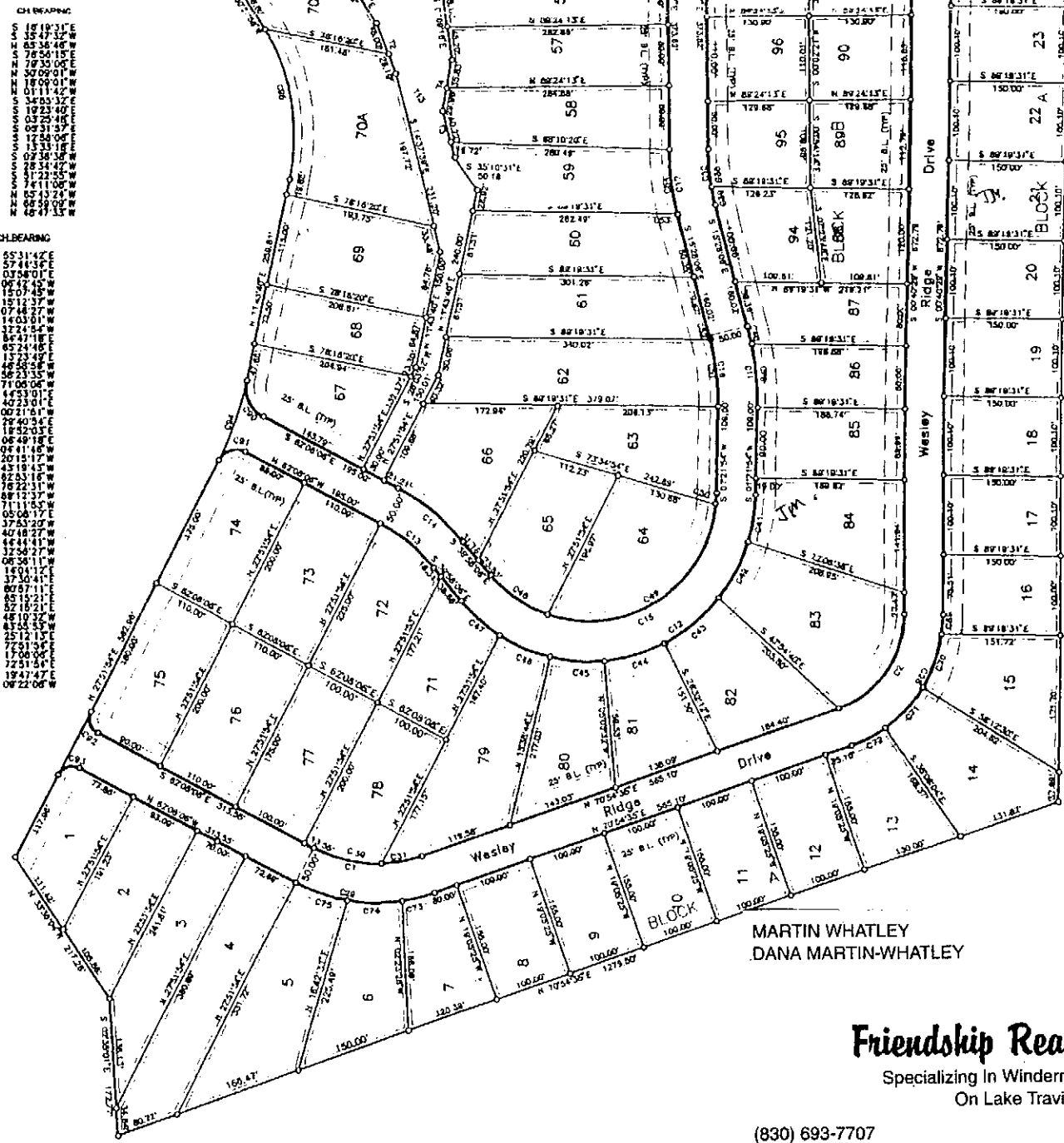


CURVE	RADIUS	LENGTH	DELTA	CHORD	CHL BEARING
C27	322.00'	161.68'	34.00°00'	190.04'	N 15°19'31"E
C28	175.00'	114.52'	30°14'06"	201.31'	N 15°47'32"W
C29	225.00'	184.39'	46°57'19"	179.28'	N 05°36'46"W
C30	175.00'	80.42'	29°36'17"	88.47'	N 78°54'15"E
C31	175.00'	52.80'	17°21'02"	57.70'	N 73°33'06"E
C32	325.00'	24.84'	6°21'01"	24.82'	N 30°09'01"W
C33	325.00'	68.31'	17°59'00"	68.04'	N 18°09'01"W
C34	325.00'	65.85'	18°15'36"	63.84'	N 05°11'14"W
C35	225.00'	18.85'	4°48'03"	18.85'	N 34°53'32"E
C36	225.00'	103.13'	26°15'42"	102.23'	N 19°23'40"E
C37	225.00'	80.47'	18°40'02"	77.25'	N 03°28'48"E
C38	225.00'	22.48'	5°33'30"	22.47'	N 05°31'37"E
C39	225.00'	21.00'	4°59'38"	20.99'	N 12°54'08"E
C40	225.00'	21.71'	5°18'37"	21.71'	N 13°22'55"W
C41	225.00'	81.84'	16°48'13"	80.00'	N 08°58'09"W
C42	225.00'	80.47'	16°28'40"	80.00'	N 08°34'42"W
C43	225.00'	80.67'	16°09'46"	80.00'	N 08°11'08"W
C44	225.00'	80.47'	15°48'49"	80.00'	N 07°50'36"W
C45	225.00'	70.31'	15°44'19"	70.00'	N 07°43'24"W
C46	225.00'	70.31'	15°24'19"	70.00'	N 07°23'09"W
C47	225.00'	88.22'	17°36'53"	85.46'	N 06°47'13"W

CURVE	RADIUS	LENGTH	DELTA	CHORD	CHL BEARING
C48	165.00'	69.82'	31°07'12"	68.52'	S 55°11'42"E
C49	165.00'	294.71'	102°20'18"	257.09'	N 19°01'18"E
C50	165.00'	15.00'	5°12'36"	14.99'	N 07°54'01"E
C51	86.00'	16.00'17"	63.71'	15.07'	N 09°42'40"W
C52	3.61'	0.40'43"	3.81'	1.50'	N 15°12'57"W
C53	81.43'	14.21'21"	81.22'	07.44'	N 07°44'27"W
C54	82.18'	26.54'27"	81.43'	14.03'01"	N 17°33'51"W
C55	30.00'	9.46'20"	29.96'	11.72'	N 04°47'18"E
C56	31.62'	36.13'45"	31.00'	34.79'	N 06°25'28"E
C57	50.00'	55.30'	63°22'03"	52.52'	N 65°24'45"E
C58	50.00'	33.48'	40°34'32"	34.79'	N 11°33'18"E
C59	4.58'	0.57'01"	4.58'	0.57'	N 04°58'28"E
C60	184.71'	22.12'17"	183.68'	56.23'35"	N 56°23'35"E
C61	424.00'	23.56'	3°10'42"	23.57'	N 71°06'05"W
C62	1025.00'	41.34'	7°17'15"	41.31'	N 65°31'53"E
C63	325.00'	109.40'	6°06'05"	108.55'	N 40°23'01"E
C64	325.00'	3.52'	0°37'15"	3.52'	N 00°21'51"E
C65	41.34'	7.17'15"	41.31'	6.79'	N 04°58'28"E
C66	325.00'	70.00'	1°20'26"	69.84'	N 18°52'03"E
C67	175.00'	78.00'	1°45'04"	77.81'	N 06°49'18"E
C68	175.00'	24.57'	8°02'35"	24.55'	N 04°41'45"E
C69	175.00'	70.48'	23°04'26"	70.00'	N 04°11'45"E
C70	70.48'	37.04'28"	70.00'	43.19'45"	N 43°19'45"E
C71	49.00'	18.02'39"	48.84'	8.25'16"	N 82°53'16"E
C72	225.00'	70.74'	1°23'34"	70.00'	N 08°12'37"W
C73	225.00'	71.18'	1°07'34"	70.89'	N 09°12'37"W
C74	353.00'	80.59'	10°10'34"	80.15'	N 11°11'53"W
C75	353.00'	19.18'	5°10'31"	19.18'	N 37°53'20"W
C76	80.17'	4.42'40"	80.15'	4.07'18"	N 40°18'27"W
C77	53.82'	3.09'47"	53.86'	4.44'41"	N 44°44'41"E
C78	100.00'	48.77'	26°48'22"	48.87'	N 17°50'27"E
C79	100.00'	38.23'	21°34'17"	38.00'	N 06°30'11"W
C80	100.00'	40.91'	23°28'29"	40.83'	N 16°04'27"E
C81	100.00'	40.91'	23°28'30"	40.83'	N 17°50'27"E
C82	100.00'	40.91'	23°28'30"	40.83'	N 07°57'11"E
C83	97.10'	17.80'10"	98.83'	8.81'43"	N 88°81'43"E
C84	198.44'	121.44'	35°29'15"	118.50'	N 72°29'54"E
C85	23.84'	3.54'31"	23.84'	4.37'53"	N 43°54'53"E
C86	41.52'	63.37'	75°01'46"	49.89'	N 25°12'15"E
C87	23.84'	3.54'31"	23.84'	4.37'53"	N 43°54'53"E
C88	23.84'	3.54'31"	23.84'	4.37'53"	N 43°54'53"E
C89	23.84'	3.54'31"	23.84'	4.37'53"	N 43°54'53"E
C90	23.84'	3.54'31"	23.84'	4.37'53"	N 43°54'53"E
C91	23.84'	3.54'31"	23.84'	4.37'53"	N 43°54'53"E
C92	23.84'	3.54'31"	23.84'	4.37'53"	N 43°54'53"E
C93	23.84'	3.54'31"	23.84'	4.37'53"	N 43°54'53"E
C94	23.84'	3.54'31"	23.84'	4.37'53"	N 43°54'53"E
C95	23.84'	3.54'31"	23.84'	4.37'53"	N 43°54'53"E
C96	23.84'	3.54'31"	23.84'	4.37'53"	N 43°54'53"E
C97	23.84'	3.54'31"	23.84'	4.37'53"	N 43°54'53"E
C98	23.84'	3.54'31"	23.84'	4.37'53"	N 43°54'53"E
C99	23.84'	3.54'31"	23.84'	4.37'53"	N 43°54'53"E
C100	23.84'	3.54'31"	23.84'	4.37'53"	N 43°54'53"E

COURSE	BEARING	DISTANCE
T1	N 16°49'24"E	34.85'
T2	S 20°14'15"E	71.18'
T3	S 18°57'44"E	59.94'
T4	S 10°06'42"W	65.78'
T5	N 02°45'59"W	40.33'
T6	N 65°08'44"W	59.97'
T7	N 37°03'53"E	57.86'
T8	N 18°54'37"E	33.87'
T9	N 23°34'28"W	39.82'
T10	N 22°12'36"E	51.55'
T11	N 27°47'19"W	120.36'
T12	N 14°58'00"W	41.43'
T13	S 34°02'32"E	129.65'



MARTIN WHATLEY
DANA MARTIN-WHATLEY



Friendship Real Estate
Specializing In Windermere Oaks
On Lake Travis

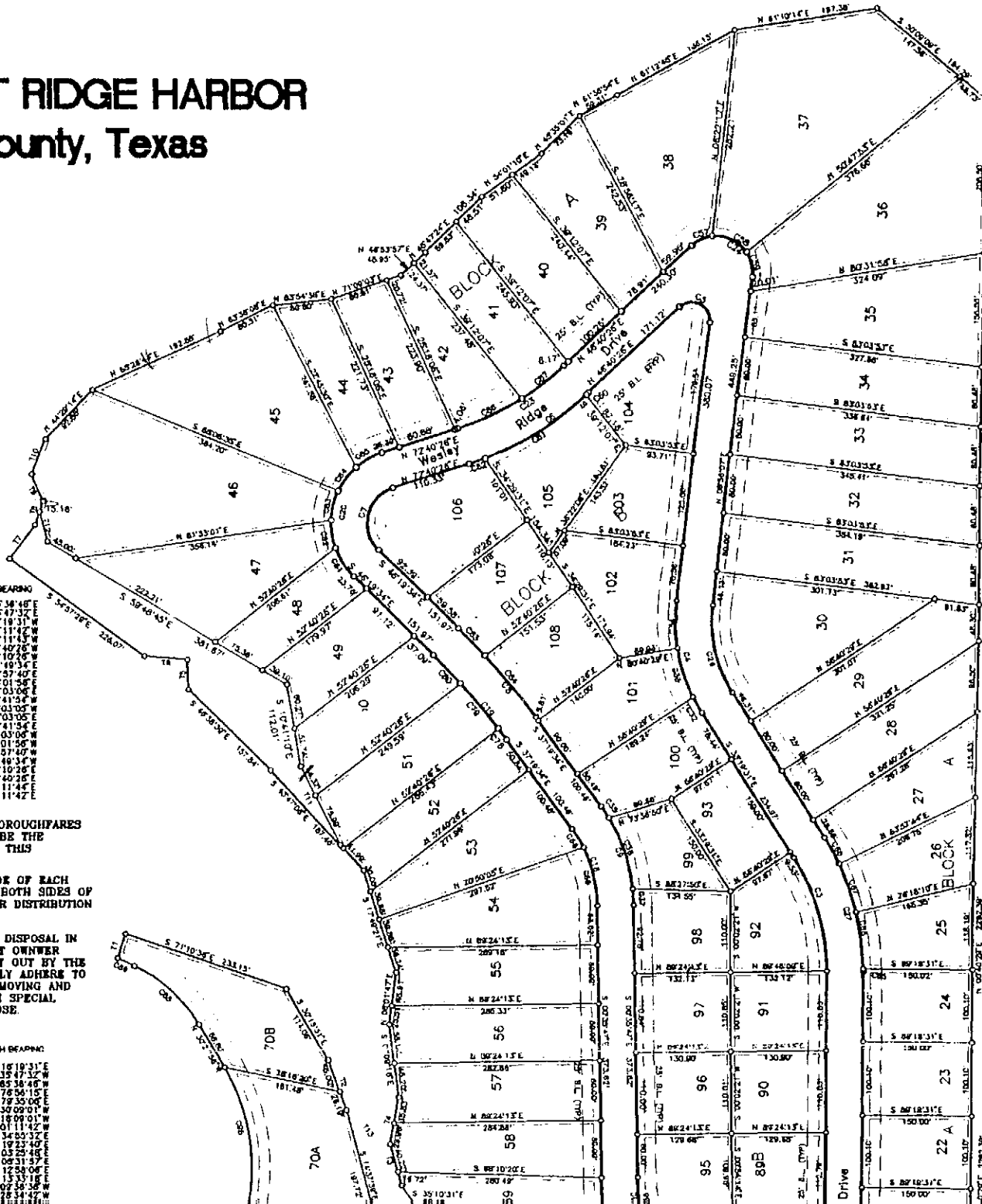
(830) 693-7707
(830) 693-4286 FAX
E-mail: friends@tstar.net
www.lakefriends.com

205 Coventry Road
Spicewood, Texas 78669

BLACKWELL LACKEY AND ASSOCIATES * AUSTIN

THE POINT AT RIDGE HARBOR

Burnet County, Texas



CURVE	RADIUS	LENGTH	DELTA	CHORD	CH BEARING
C1	175.00'	143.47'	48°57'19"	139.44'	S 65°48'40"
C2	175.00'	153.25'	57°14'06"	143.81'	S 55°47'32"
C3	275.00'	103.19'	34°00'00"	100.80'	N 16°19'31" W
C4	225.00'	156.10'	40°13'34"	154.87'	N 17°11'42" W
C5	75.00'	81.20'	14°05'41"	47.02'	N 53°11'44" W
C6	425.00'	193.84'	28°00'00"	191.21'	S 62°40'26" W
C7	50.00'	103.85'	119°00'00"	44.16'	N 11°02'20" W
C8	1025.00'	181.01'	9°00'00"	180.84'	N 14°03'45" E
C9	225.00'	144.24'	38°13'47"	141.78'	N 18°57'40" E
C10	275.00'	71.38'	14°32'19"	71.18'	N 08°01'58" E
C11	353.00'	104.30'	18°50'00"	103.92'	N 07°03'04" E
C12	215.00'	120.34'	138°40'00"	402.33'	N 70°41'54" W
C13	225.00'	67.05'	27°09'58"	66.50'	N 51°03'05" W
C14	275.00'	104.39'	22°09'58"	105.73'	N 51°03'05" E
C15	185.00'	398.33'	138°40'00"	308.74'	N 70°41'54" E
C16	305.00'	88.81'	18°50'00"	88.28'	N 07°03'04" W
C17	325.00'	84.16'	14°52'15"	84.12'	N 08°01'58" W
C18	175.00'	112.18'	36°33'47"	110.27'	N 18°57'40" W
C19	975.00'	153.15'	9°00'00"	153.00'	N 41°48'34" W
C20	160.00'	207.49'	119°00'00"	172.33'	N 13°10'26" E
C21	375.00'	170.17'	28°09'58"	168.71'	N 07°03'04" E
C22	50.00'	122.40'	140°15'41"	84.05'	N 65°48'40" E
C23	175.00'	122.87'	40°15'34"	120.45'	N 17°11'42" E

MAINTENANCE OF ALL STREETS, ROADS AND THOROUGHFARES DELINEATED AND SHOWN ON THIS PLAT SHALL BE THE RESPONSIBILITY OF THE PROPERTY OWNERS OF THIS SUBDIVISION.

AN EASEMENT 5 FEET IN WIDTH ON EITHER SIDE OF EACH PROPERTY LINE AND AN EASEMENT OF 10' ON BOTH SIDES OF THE RIGHT-OF-WAY ARE HEREBY RETAINED FOR DISTRIBUTION LINES AND/OR UTILITIES.

PERTAINING TO GARBAGE AND WASTE MATERIAL DISPOSAL IN THIS SUBDIVISION, EACH LOT OWNER AND TRACT OWNER SHALL CONFORM TO THE REQUIREMENTS AS SET OUT BY THE STATE HEALTH DEPARTMENT AND SHALL STRICTLY ADHERE TO SUCH REGULATIONS AND REQUIREMENTS BY REMOVING AND DUMPING ON APPROVED GROUNDS OR THROUGH SPECIAL SERVICES SET UP BY OTHERS FOR THIS PURPOSE.

CURVE	RADIUS	LENGTH	DELTA	CHORD	CH BEARING
C27	325.00'	182.84'	34°00'00"	190.04'	S 16°19'31" E
C28	175.00'	214.52'	70°14'06"	201.34'	S 4°48'12" W
C29	225.00'	184.39'	46°57'19"	179.28'	N 85°38'48" W
C30	175.00'	178.00'	42°58'17"	186.42'	N 78°54'15" W
C31	175.00'	52.89'	17°21'02"	52.79'	N 79°35'04" E
C32	220.00'	24.84'	6°21'01"	24.82'	N 30°09'01" W
C33	225.00'	68.51'	17°50'00"	68.04'	N 18°09'01" W
C34	225.00'	63.85'	18°15'30"	63.84'	N 01°11'42" W
C35	225.00'	18.85'	4°48'03"	18.85'	S 34°53'32" E
C36	225.00'	103.13'	28°15'42"	102.25'	N 19°23'48" W
C37	225.00'	22.28'	5°40'02"	22.15'	N 18°09'01" W
C38	270.00'	47.38'	9°33'39"	47.33'	N 05°31'57" E
C39	275.00'	24.00'	4°59'58"	23.99'	N 25°08'06" E
C40	185.00'	131.71'	3°19'17"	131.71'	N 13°13'15" W
C41	215.00'	81.04'	16°24'20"	81.57'	N 07°56'58" W
C42	215.00'	80.47'	21°28'40"	80.00'	N 28°34'47" W